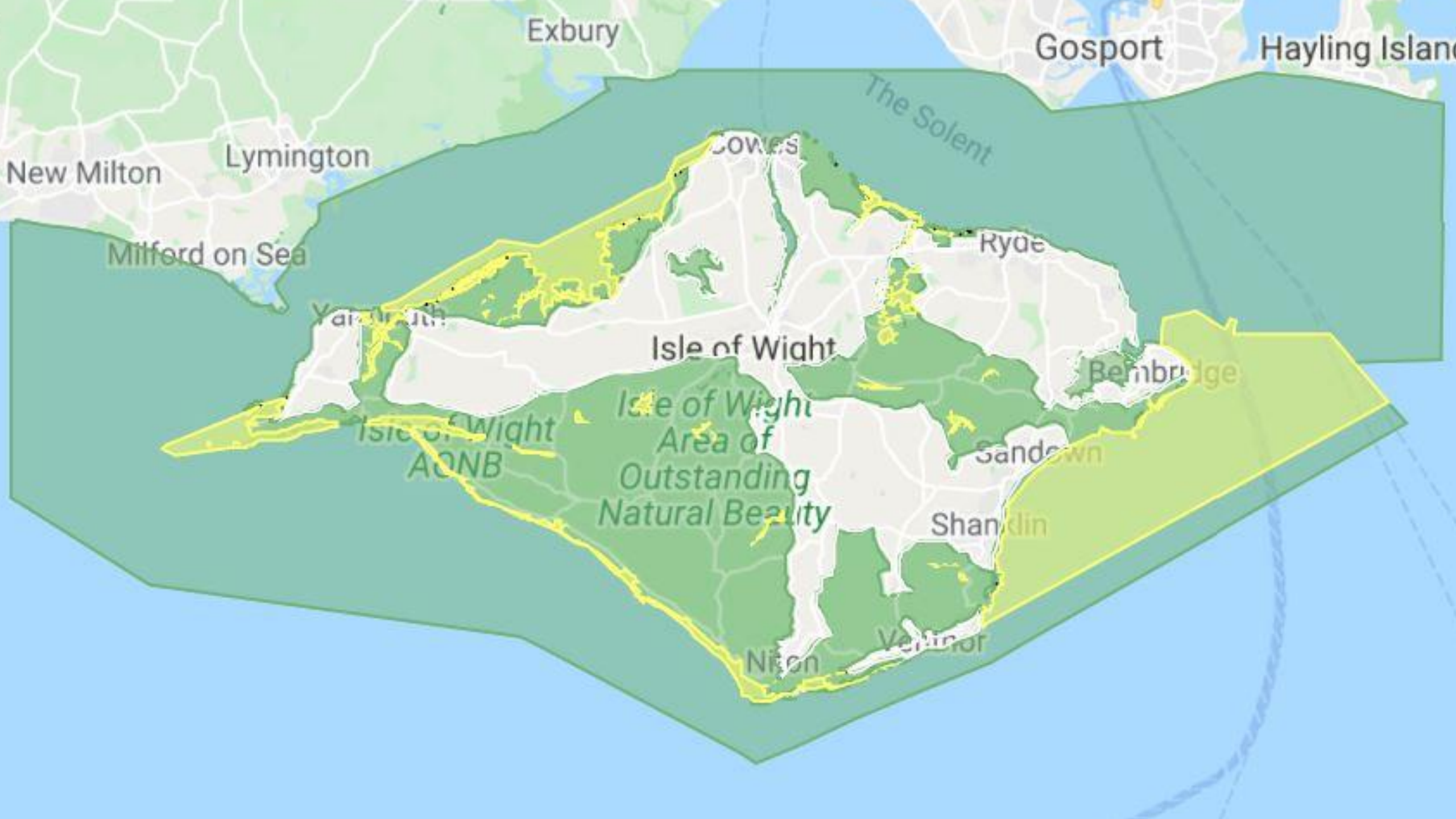




March 2022



IWC supporting the UNESCO Biosphere & Mission Zero Strategy



Exbury

Gosport

Hayling Island

The Solent

Lymington

COWES

New Milton

Ryde

Milford on Sea

Yarborough

Isle of Wight

Bembridge

Isle of Wight
AONB

Isle of Wight
Area of
Outstanding
Natural Beauty

Sandown

Shanklin

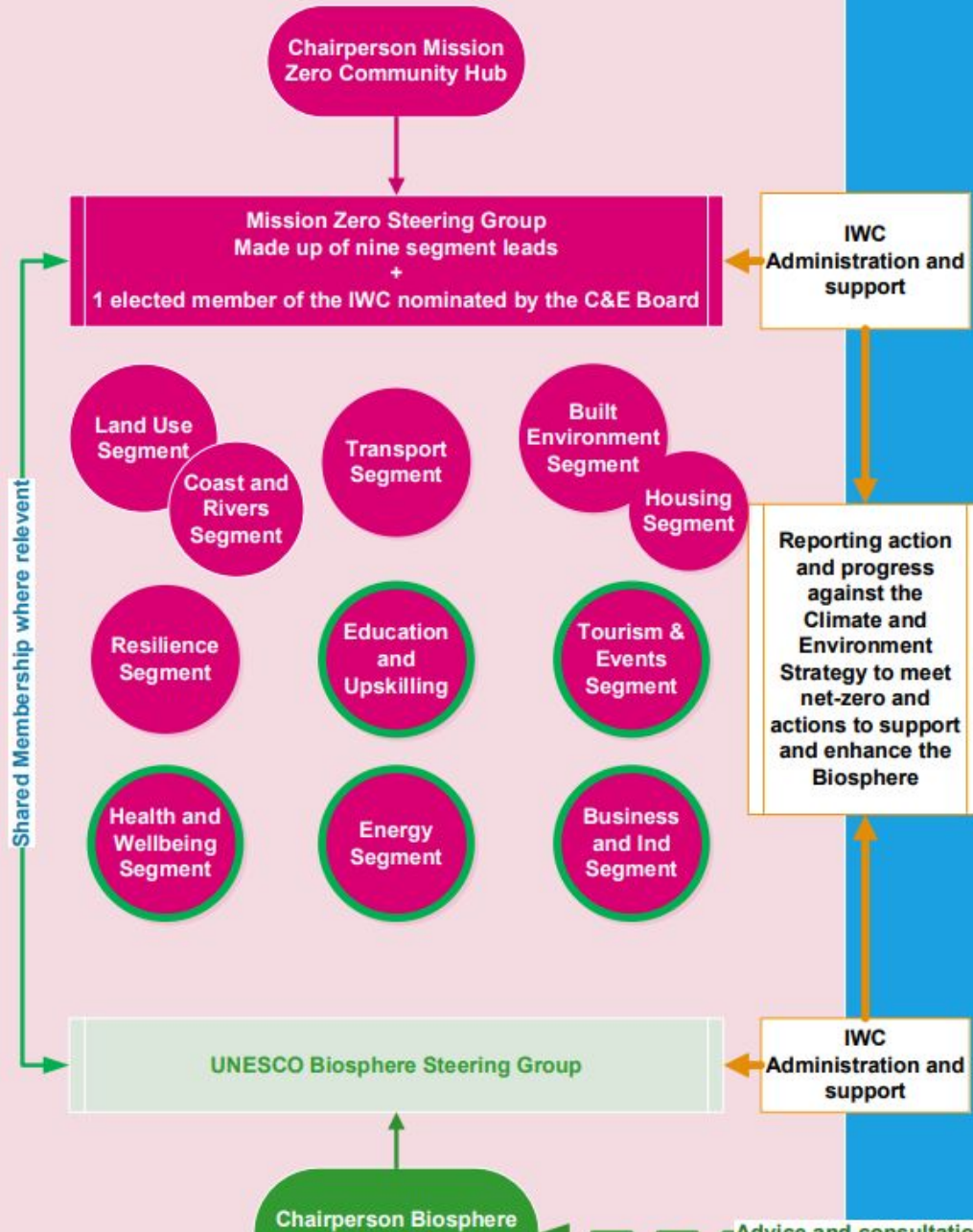
Niton

Ventnor

GOVERNANCE STRUCTURE

Hubs & Biosphere

Autonomous Bodies – Self Governing



IWC



The Isle of Wight UNESCO Biosphere Reserve

A Biosphere Reserve?

Is about improving the relationship between people, culture and their local environment, globally.



2019

Isle of Wight declared an international Biosphere Reserve

MISSION ZERO

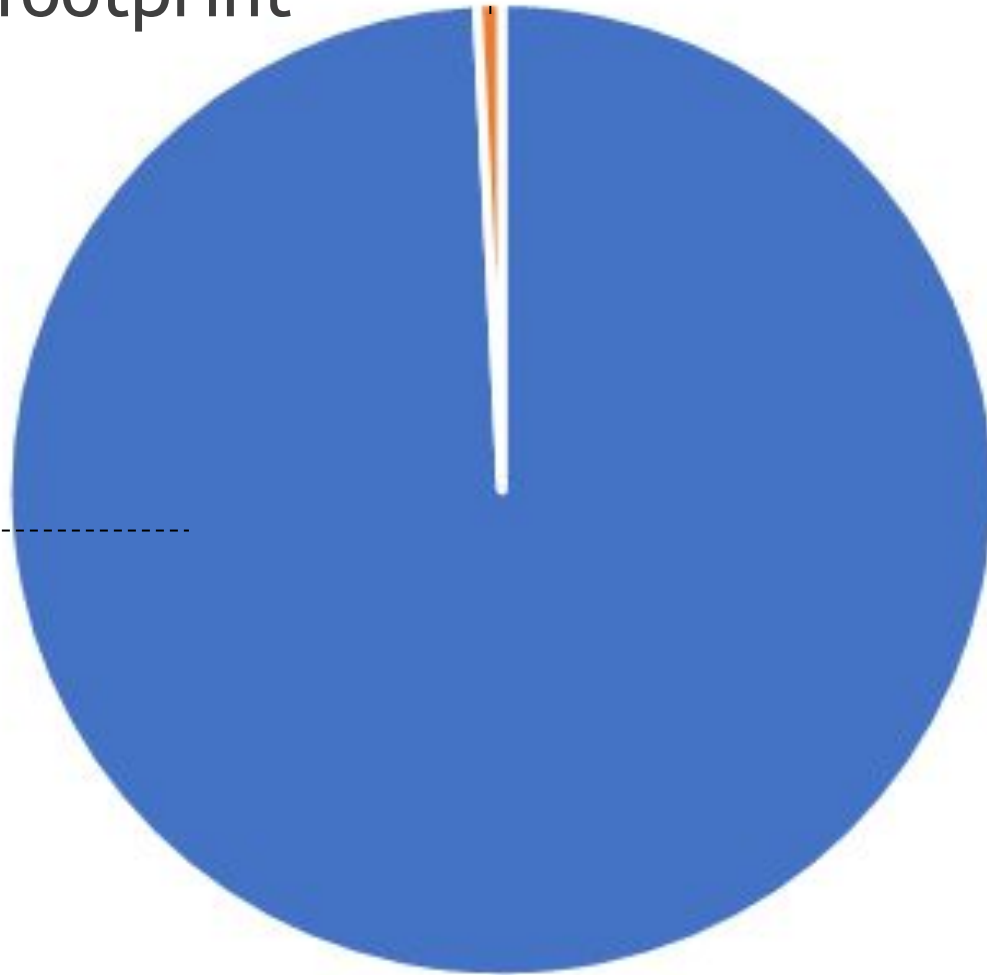
Climate and Environment Strategy 2021-2040

US

Isle of Wight carbon footprints

■ 558,200 tCO₂e

Island footprint
2017



■ 4,164 tCO₂e

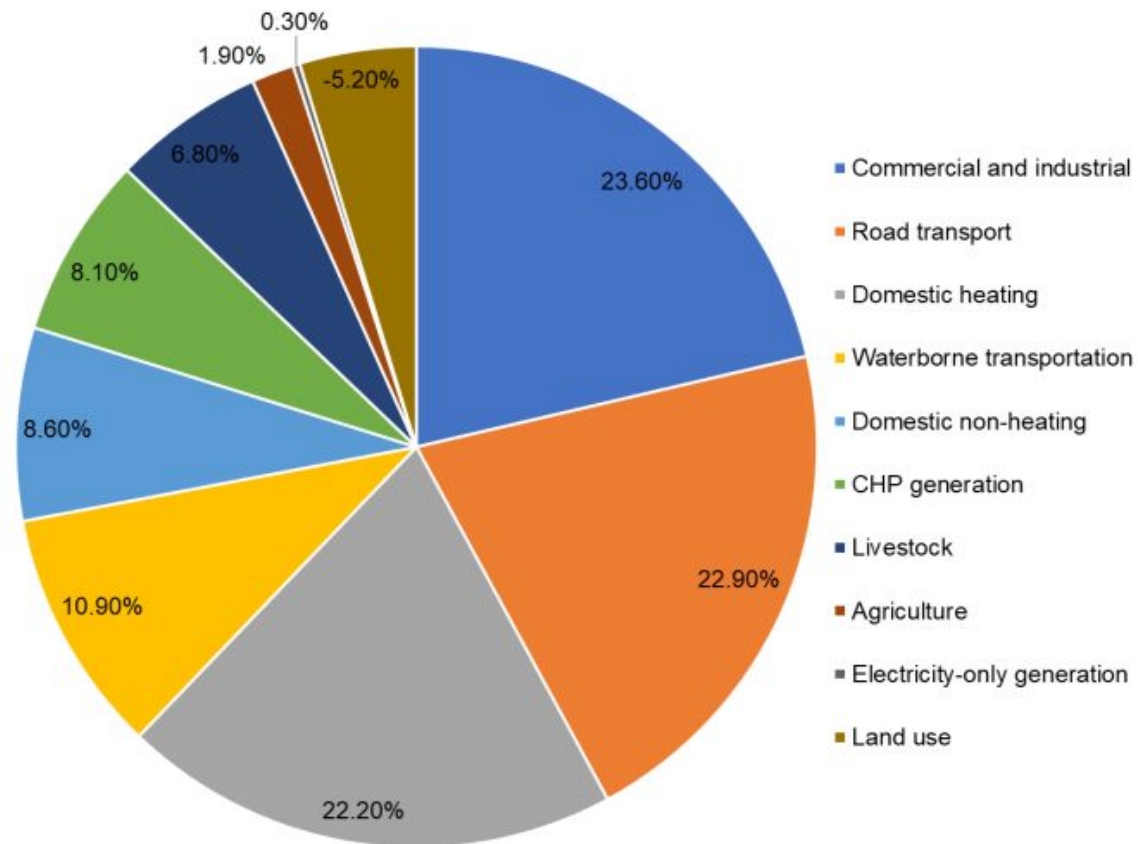
Council footprint
2018/2019

Carbon Footprint

The Island 558,200 tCO₂e

558,200 tCO₂e Island footprint 2017

FIGURE 2. BASELINE EMISSIONS FOR THE ISLE OF WIGHT BY SECTOR, FROM REGEN ANALYSIS (KtCO₂e)



Largest sources of Emissions:

1. Commercial and Industrial
2. Road transport
3. Domestic heating

2040 ISLAND TARGET

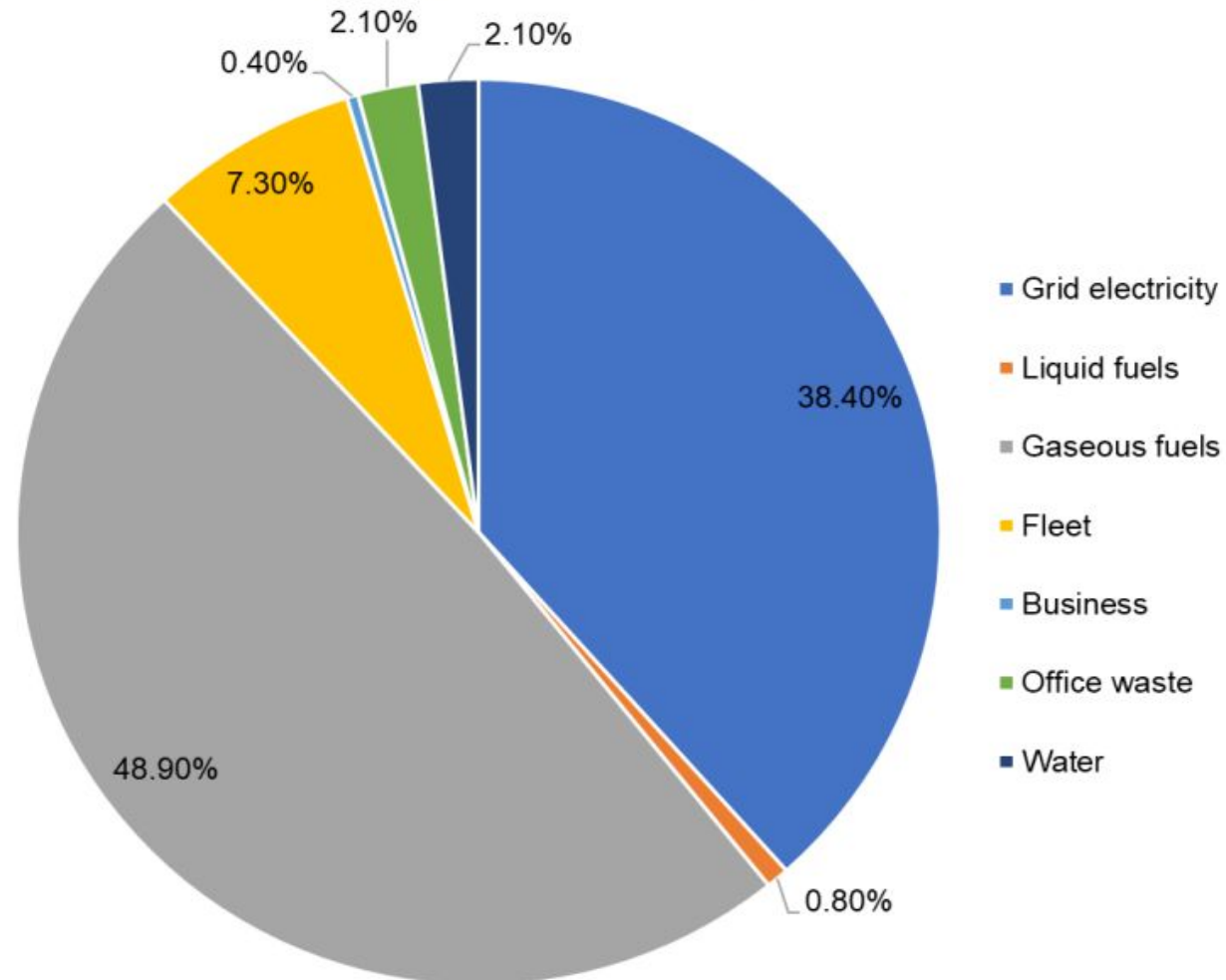
Net zero emissions with no more than 15% offset taking place on privately-owned land and marine environment

Carbon Footprint

Isle of Wight Council 4,164 tCO₂e

4,164 tCO₂e Council footprint 2018/2019

FIGURE 3. ISLE OF WIGHT COUNCIL CARBON FOOTPRINT, 2018/19



2030 COUNCIL TARGET

Net zero emissions in all council operations, with no more than 15% offset taking place through planting schemes on council owned land

2035 IOW SCHOOLS TARGET

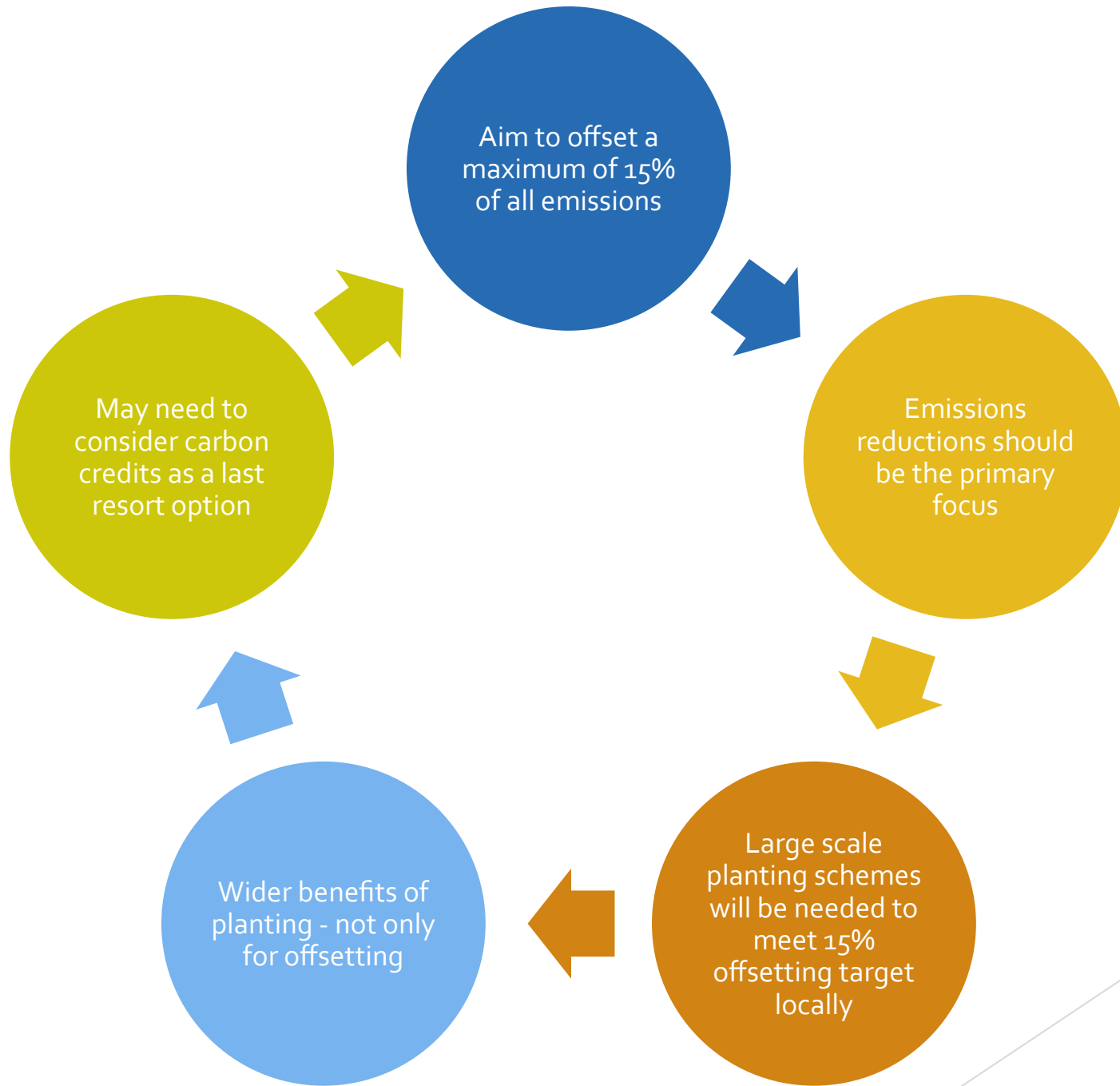
Net zero emissions in all school operations, with no more than 15% offset taking place through planting schemes



IWC supporting the UNESCO Biosphere & Mission Zero Strategy

HOW?

Framework for achieving net zero targets and 15% offset



2040 HOW?

The Island community are resilient

EMBED

EMPOWER & SUPPORT

ADAPT

LEAD

2040 HOW? EMBED

1. Low carbon thinking is a part of behavioral norm
2. Well insulated homes support wellbeing and affordability
3. Well insulated businesses are economically beneficial
4. 10 per cent net bio-diversity gain in new developments supports the whole island.
5. High quality local food grown supporting biodiversity and minimal carbon footprint through regenerative methods.

2040 HOW?

EMPOWER & SUPPORT

1. Residents ensure well insulated homes & fuel poverty reduced
2. Residential care homes to be adapted for colder winters and hotter summers with insulation and low carbon heating
3. Schools to be adapted for colder winters and hotter summers with insulation and low carbon heating

2040 HOW? ADAPT

1. Agriculture has adapted to changing rainfall patterns
2. Strategic transport networks protected from flooding and erosion
3. Sea level rise managed and residents in at risk areas are supported
4. Strategic infrastructure on potential flood plains have adaptation plans
5. Businesses and offices are adapted to keep staff and customers in a safe climate (heating and cooling strategies in place)

2040 HOW?

LEAD

1. Lead the many initiatives that together make up mission zero
2. Lead 'Together for Mission Zero' with the ESF to develop networks and community action plans

WHAT NOW?

Underway & Next steps

UNDERWAY

.Formed: Land and Energy Hub, Built Environment Hub (new & retrofit homes)

.Being initiated: Transport Hub (including ferries)

.Various Council Building being fitted with PV and better insulation.

.Net Zero embedded within the Strategy and Action Plan

Running but needs support: Environment and sustainability Forum (ESF)

.Under active discussion: A One Island brand linked to Biosphere

NEXT STEPS

.Hubs needing support: Education, Health & Wellbeing, Resilience, Business & Industry Hubs

.Town & Parish councils Monthly meetings on Net Zero progress

.One overarching community campaign for commercial and environmental actions