

MISSION ZERO

Transport Hub

NET ZERO

Climate Emergency Declaration – 2019

Climate & Environment Strategy – Sept 2021

Net Zero Council Emissions by 2030

Net Zero Schools' Emissions by 2035


Net Zero Island Emissions by 2040

Offsetting capped at 15%

Move as quickly as possible in key sectors

Delivery through Mission Zero Hubs





These terms of reference are applicable to the establishment of a Climate Action Partnership (hub) to achieve the aims of the mission zero 2040 strategy as they relate to Island transport and the transport connections to the mainland.

Mission Zero 2040 strategy was formally adopted by the IWC cabinet in Sept 2021. This Strategy sets out the council's aspirations and targets to achieve net-carbon zero in its own operations and as an island. The Council intend to use the UNESCO Biosphere designation to bring greater awareness of this journey.

HUB MISSION STATEMENT

The hub will be a partnership of the major transport providers and the local council along with other key players that the hub chooses to invite. They will engage with the island transport plan in its development and be active in defining and driving the actions required to deliver it.

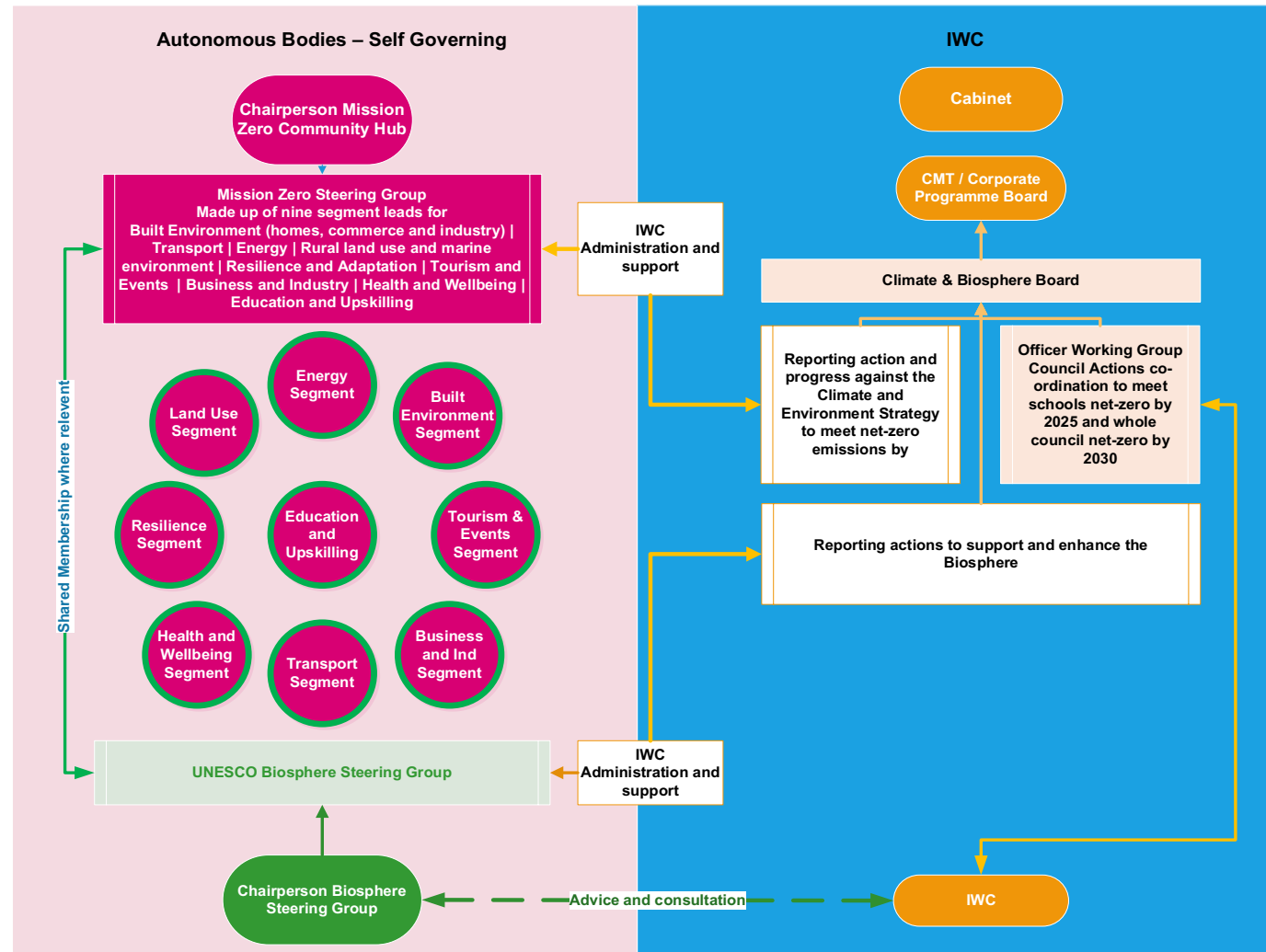
The hub members will ensure that areas of business confidentiality are not breached and refer back to the TIB on any potential areas of concern or change of scope.

Hub members are expected to provide about 1 hour per week towards supporting the hubs activities, any significant action will be referred back to either member organisations or the TIB (as appropriate) ahead of drawing on more resource.

Rob Sauven will chair initially until the hub is formed and votes its own chair.

The Hub chair will update the TIB on a quarterly basis.

MZ HUBS STRUCTURE





Actively engage in the finalization of the transport plan and the refinement of the Mission Zero Strategy.



Act as a central point to provide a cohesive integrated approach to net zero transport initiatives within the island and across the solent engaging all stakeholders.



Where agreed co-ordinate and lead initiatives and actions to deliver on the mission.

TRANSPORT HUB OBJECTIVES

TRANSPORT OUTCOMES (FROM MISSION ZERO STRATEGY)

Increase public and active transport use by tourists from (11 to 20% bus/train use; 1% to 5% bike use by 2040)

At least 40% of Island journeys to take place by cycling and walking by 2040

Ensure cycling is accessible to all Island residents, with at least 5 bikes/scooters available per thousand

Safe and Secure Storage at transport connections to encourage on-going cycling.

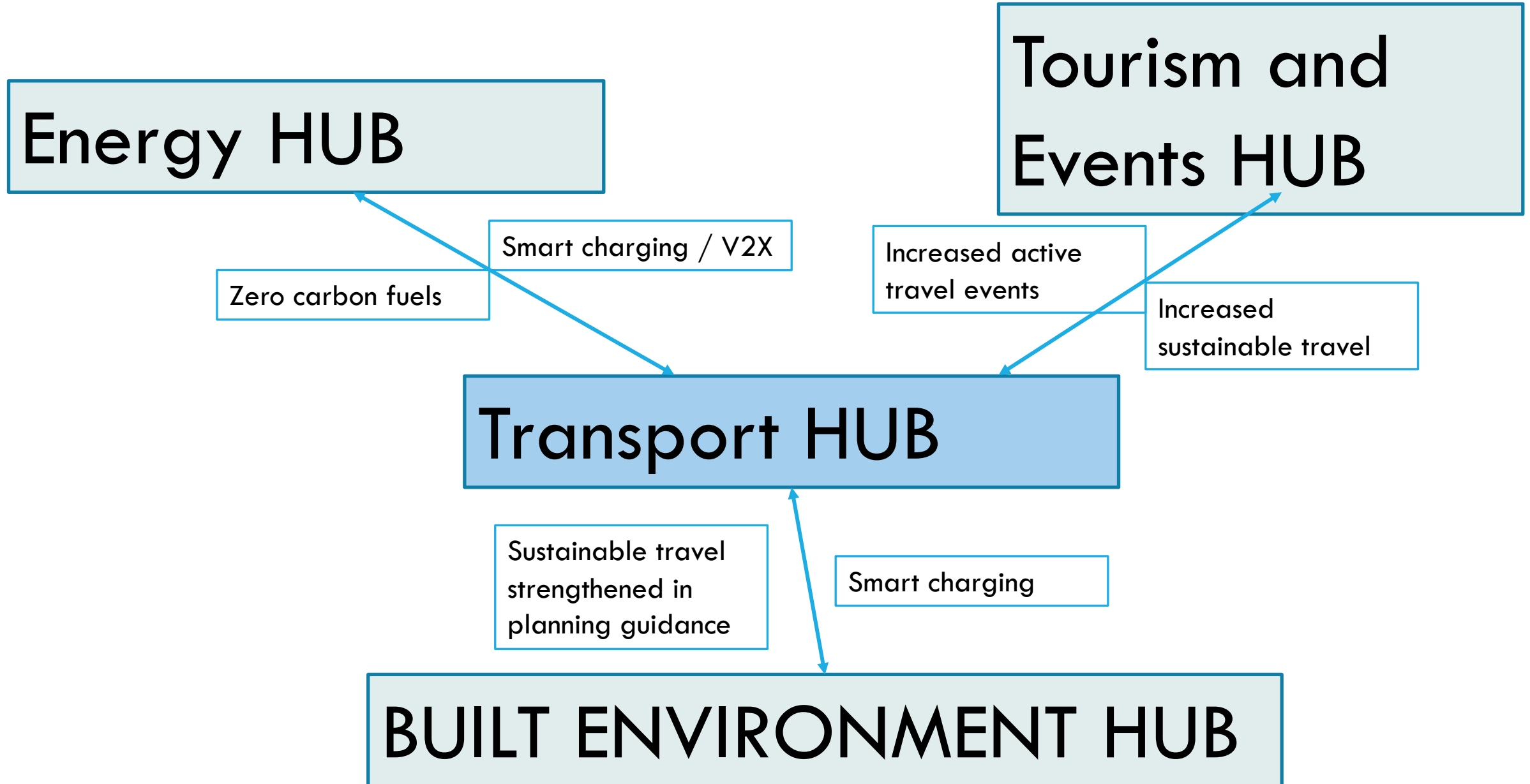
Introduce bus priority schemes around the island to encourage more bus journeys by 2040

Introduce a 'people first' approach to traffic flows in urban centres

Encourage sustainable travel as part of planning conditions

Ensure one EV charger available per 8 households who don't have off-street parking by 2040 (on-street residential charging) **

Examples of hub interfaces and overlaps.



HUB OPERATING RHYTHM

Membership- Initially proposed by TIB members

Frequency of meetings- Monthly

Report to TIB- Quarterly or as requested.

Chair- To be appointed by hub members.

Hub Membership

Hover travel-name

Island Roads/Vinci- name

Red funnel-name

Wightlink-name

South Western Rail-name

Network Rail-name

Visitwight-name

Southern Vectis-name

Active transport? Provider?

Isle Of Wight Council-name

Chair- Rob Sauven initially until established.